



DESCRIPTION

- AISI 4340 nickel-plated steel body and AISI 304 stainless steel shell
- Combined error $\leq \pm 0.014\%$
- IP69K protection rating
- Two-connector digital output
- Compatible with WINOX BGE and WTAB BGE
- Load cell bases with anti-rotation mechanism
- Earthing cable
- Pipe clamps
- Lightning and electrical shock protection

CAPACITY	kg	ACCURACY CLASS C5	NET WEIGHT (kg)	CONNECTION CABLE	CODE
25000		•	3.5	-	COD25000CCS
50000		•	3.7	-	COD50000CCS
25000		•	3.5	5 metres	COD25000CC5
50000		•	3.7	5 metres	COD50000CC5
25000		•	3.5	10 metres	COD25000CC
50000		•	3.7	10 metres	COD50000CC

CERTIFICATIONS



OIML R60 C5



Equivalent of the CE marking for the United Kingdom

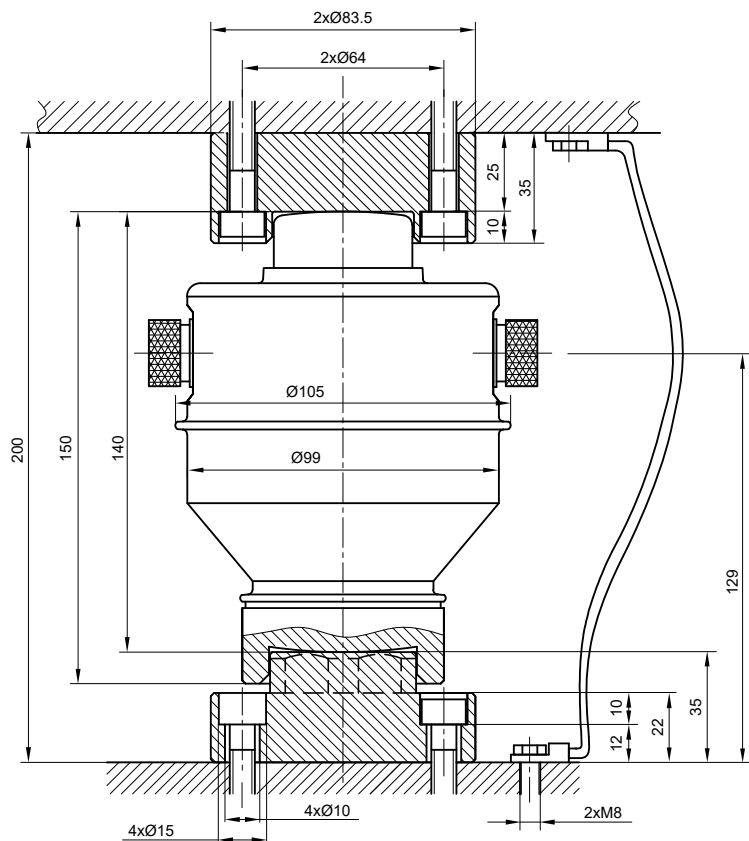


Declaration of conformity + IP69K marking protection rating
 Water protection in case of high-pressure or steam jet cleaning (test: pressurized water is sprayed from a distance of max 150 mm)
 Water pressure: 100 bar; temperature: 80 °C; test duration: 250 seconds (reference standard: DIN 40050-9)

OPTIONS ON REQUEST

	DESCRIPTION	CODE
	Anti-rat cable for connecting to indicator, lenght: 20 m, equipped with connector on one end only.	CAVOCONDIG
	Anti-rat cable, lenght: 10 m, equipped with connector on both ends.	CAVO2CONDIG
	Anti-rat cable, lenght: 5 m, equipped with connector on both ends.	CAVO2CONDIG5

DIMENSIONS (mm)

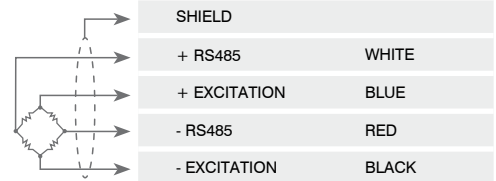


TECHNICAL FEATURES

Material	AISI 4340 nickel-plated steel body and AISI 304 stainless steel shell		
OIML R60 Accuracy class • Verification intervals	C5 • 5000		
Nominal load (E max)	25000 - 50000 kg		
Minimum verification interval (V min)	E max / 10000		
Combined error	≤ ±0.014%		
Protection class	IP69K		
Temperature effect on zero	0.0015% °C	Recommended power supply voltage	9 ÷ 12 VDC
Temperature effect on span	0.0015% °C	Safe overload (% of full scale)	150%
Compensated temperature range	-10 °C / +40 °C	Ultimate overload (% of full scale)	300%
Operating temperature range	-30 °C / +70 °C	RS485 serial interface	Halfduplex
Creep at nominal load in 30 minutes	0.02%	Maximum transmission distance	1200 m
Max supply voltage without damage	20 VDC		

ELECTRICAL CONNECTIONS

Cable length	5 m/10 m
Cable diameter	8.8 mm
Cores	4 x 0.2 mm ²



EXAMPLE OF APPLICATION

