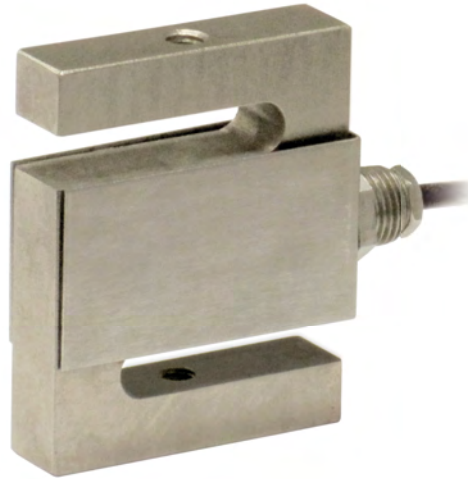




Capacity from 15 kg to 60 kg



- AISI 4140 NICKEL PLATED STEEL
- COMBINED ERROR $\leq \pm 0.02\%$
- PROTECTION CLASS IP65

CAPACITY	kg	ACCURACY CLASS C3		NET WEIGHT (kg)	CODE
15		•	•	0.28	SA15
30		•	•	0.28	SA30
60		•	•	0.28	SA60

CERTIFICATIONS



OIML R60 C3



Complies with the Eurasian Customs Union standards



Equivalent of the CE marking for the United Kingdom



Complies with United Kingdom regulations for legal for trade use

CERTIFICATIONS ON REQUEST



ATEX II 1GD (zone 0-1-2-20-21-22) (CE - UK CA)




IECEx (zone 0-1-2-20-21-22)

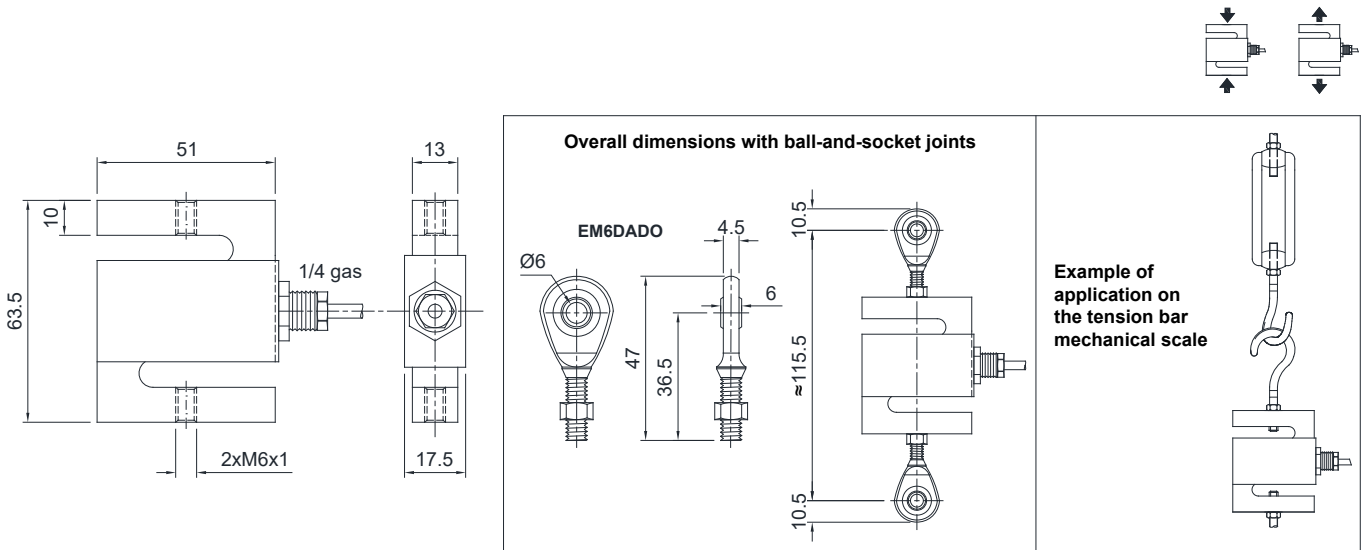


Complies with the Eurasian Customs Union standards for use in potentially explosive atmospheres

COMPLEMENTARY ACCESSORIES

DESCRIPTION	CODE
 <p>galvanized C45 steel ball-and-socket joint with nut.</p> <p>Dimensions: M6x1</p> <p>Load cell capacity: 15 ÷ 60 kg</p>	EM6DADO

DIMENSIONS (mm)



TECHNICAL FEATURES

Material	AISI 4140 nickel plated steel		
OIML R60 Accuracy class • Verification intervals	C3 • 3000		
Nominal load (E max)	15 - 30 - 60 kg		
Minimum verification interval (V min)	E max / 8000		
Combined error	≤ ±0.02%		
Protection class	IP65		
Rated output	2 mV/V ± 10%	Input resistance	381 Ω ± 10
Temperature effect on zero	0.0017% °C	Output resistance	350 Ω ± 10
Temperature effect on span	0.0013% °C	Zero balance	± 1%
Compensated temperature range	-10 °C / +40 °C	Insulation resistance	> 5000 MΩ
Operating temperature range	-20 °C / +60 °C	Safe overload (% of full scale)	120%
Creep at nominal load in 30 minutes	0.03%	Ultimate overload (% of full scale)	300%
Max supply voltage without damage	15 V	Deflection at nominal load	0.2 mm

ELECTRICAL CONNECTIONS

Cable length	3 m
Cable diameter	4 mm
Cores	4 x 0.24 mm ²



The Company reserves the right to make changes to the technical data, drawings and images without notice.