



Manufactured according to OIML R60 standards

Capacity from 30000 kg to 250000 kg



- 17-4 PH STAINLESS STEEL
- HOLES FOR STANDARD SHACKLES
- COMBINED ERROR $\leq \pm 0.08\%$
- PROTECTION CLASS IP68

| CAPACITY | kg | NET WEIGHT (kg) | CODE |
|----------|----|-----------------|-----------|
| 30000 | | - | TBT30000 |
| 40000 | | - | TBT40000 |
| 50000 | | - | TBT50000 |
| 60000 | | - | TBT60000 |
| 100000 | | - | TBT100000 |
| 250000 | | - | TBT250000 |

CERTIFICATIONS

EAC Complies with the Eurasian Customs Union standards

UK CA Equivalent of the CE marking for the United Kingdom

CERTIFICATIONS ON REQUEST

✓ Linearity test

Ex ATEX II 1GD (zone 0-1-2-20-21-22) (**CE - UK CA**)

IECEx (zone 0-1-2-20-21-22)

EAC Ex Complies with the Eurasian Customs Union standards for use in potentially explosive atmospheres

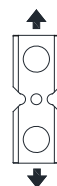
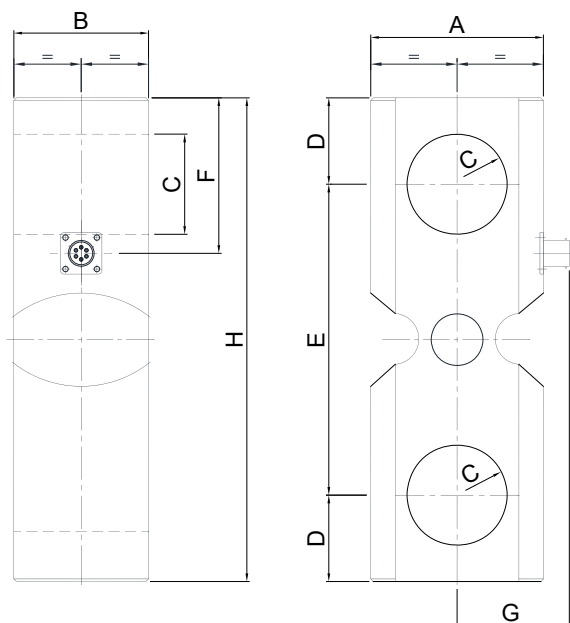
OPTIONS ON REQUEST

DESCRIPTION



Two redundant strain gauges Wheatstone bridges (350 Ω) with two output cables; for dual safety systems.

DIMENSIONS (mm)



| | kg 30000 kg 40000 kg 50000 kg 60000 | kg 100000 | kg 250000 |
|----------|--|-----------|-----------|
| A | 100 | 127 | 240 |
| B | 78 | 88 | 110 |
| C | Ø 58 | Ø 71 | Ø 102 |
| D | 50 | 70 | 120 |
| E | 180 | 200 | 360 |
| F | 90 | 120 | 185 |
| G | 65 | 68 | 136 |
| H | 280 | 340 | 600 |

TECHNICAL FEATURES

| | | | |
|-------------------------------------|--|-------------------------------------|-----------|
| Material | AISI 420 stainless steel | | |
| Nominal load (E max) | 30000 - 40000 - 50000 - 60000 - 100000 - 250000 kg | | |
| Combined error | ≤ ±0.08% | | |
| Protection class | IP68 | | |
| Rated output | 1.0 mV/V ±0.1% | Input resistance | 350 Ω ±20 |
| Temperature effect on zero | 0.005% °C | Output resistance | 350 Ω ±5 |
| Temperature effect on span | 0.005% °C | Zero balance | ±1% |
| Compensated temperature range | -20 °C / +70 °C | Insulation resistance | >5000 MΩ |
| Operating temperature range | -30 °C / +90 °C | Safe overload (% of full scale) | 150% |
| Creep at nominal load in 30 minutes | 0.03% | Ultimate overload (% of full scale) | 300% |
| Max supply voltage without damage | 15 V | Deflection at nominal load | 0.3 mm |

ELECTRICAL CONNECTIONS

| | |
|----------------|--------------------------|
| Cable length | 10 m |
| Cable diameter | 6 mm |
| Cores | 6 x 0.14 mm ² |

